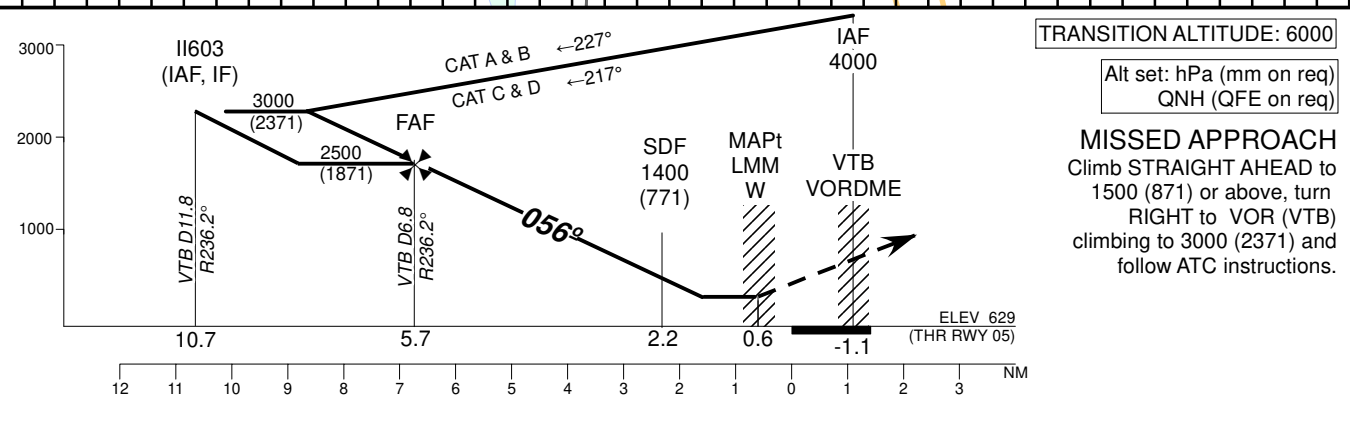
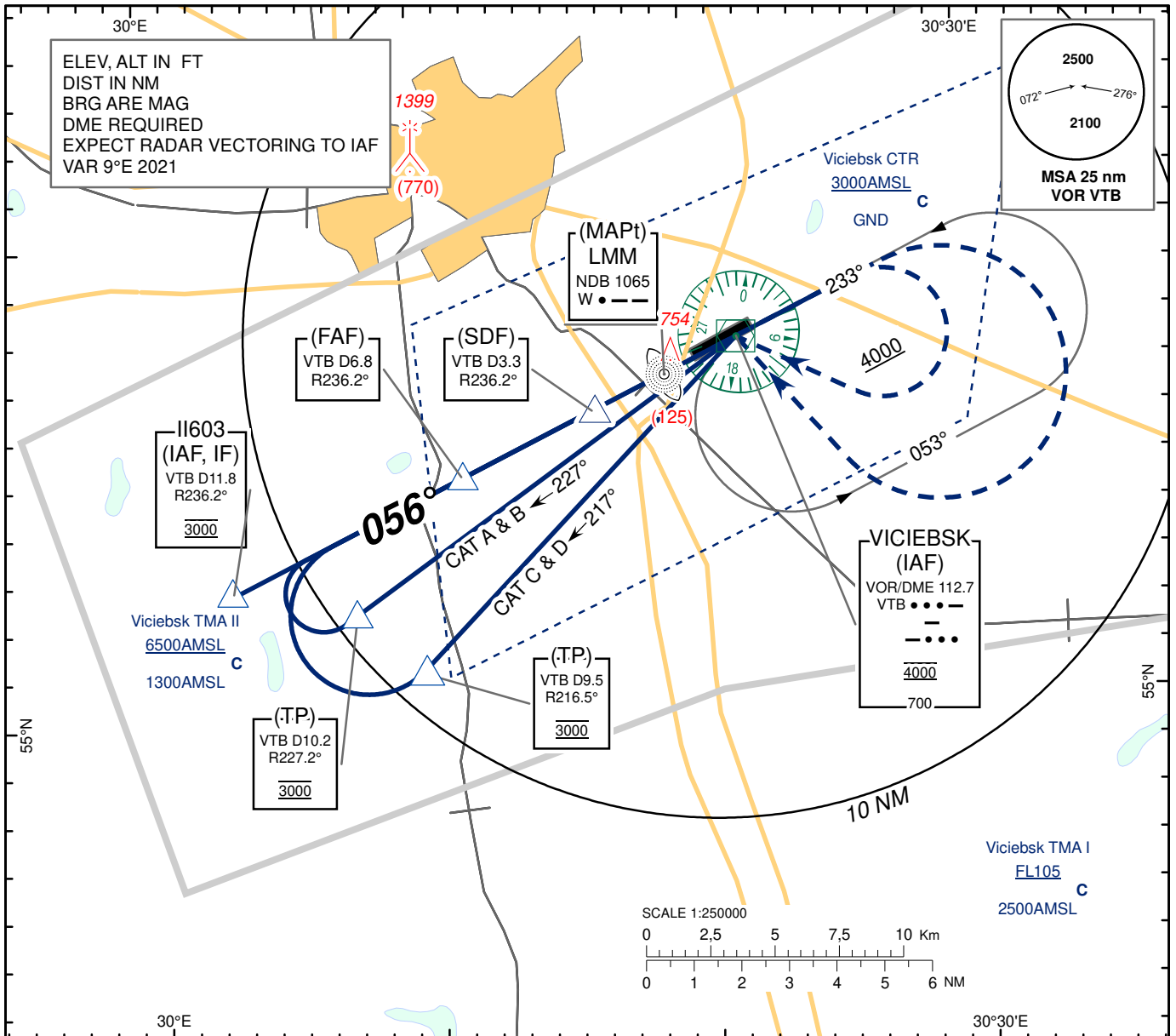


**INSTRUMENT
APPROACH
CHART - ICAO**

AERODROME ELEV 682
HEIGHTS RELATED TO
THR RWY 05 - ELEV 629

TWR	120.400
MET	119.425 (EN) 126.525 (RUS)

**VICIEBSK
VOR
RWY 05**



TRANSITION ALTITUDE: 6000
Alt set: hPa (mm on req)
QNH (QFE on req)

MISSED APPROACH
Climb STRAIGHT AHEAD to 1500 (871) or above, turn RIGHT to VOR (VTB) climbing to 3000 (2371) and follow ATC instructions.

Aircraft Category	A	B	C	D	DME VTB	9	8	7	6	5	4	3	2
						DIST THR	7.9	6.9	5.9	4.9	3.9	2.9	1.9
Straight-in Approach OCA(H)	VOR/DME	970 (340)	970 (340)	970 (340)	970 (340)	2852	2594	2335	2077	1818	1560	1301	1041
						2223	(1965)	(1706)	(1448)	(1189)	(931)	(672)	(412)
Circle - to - land	1150 (470)	1180 (500)	1320 (630)	1470 (790)	Timing not authorized for defining the MAPt								
					GS	Kt	80	100	120	140	160	180	
					Rate of descent	ft/min	420	530	640	740	850	950	

CHANGE: Date.

VICIEBSK
VOR
RWY 05

AERONAUTICAL DATA TABULATION

VOR approach to RWY05 from VTB VOR/DME, II603	
Fix/point	Coordinates
II603 (IAF, IF) R 236.2° D11.8 VTB	550241N 0300255E
(FAF) R 236.2° D6.8 VTB	550448N 0301048E
(TP) R 227.2° D10.2 VTB (Vmax 140 4 MIN)	550201N 0300655E
(TP) R 216.5° D9.5 VTB (Vmax 210 2.5MIN)	550100N 0300947E
(SDF) R 236.2° D3.3 VTB	550616N 0301619E
(IAF) VTB VOR/DME	550740.4N 0302135.8E
(MAPt) W LMM	550656.5N 0301855.2E
THR RWY 05	550715.03N 0301953.77E